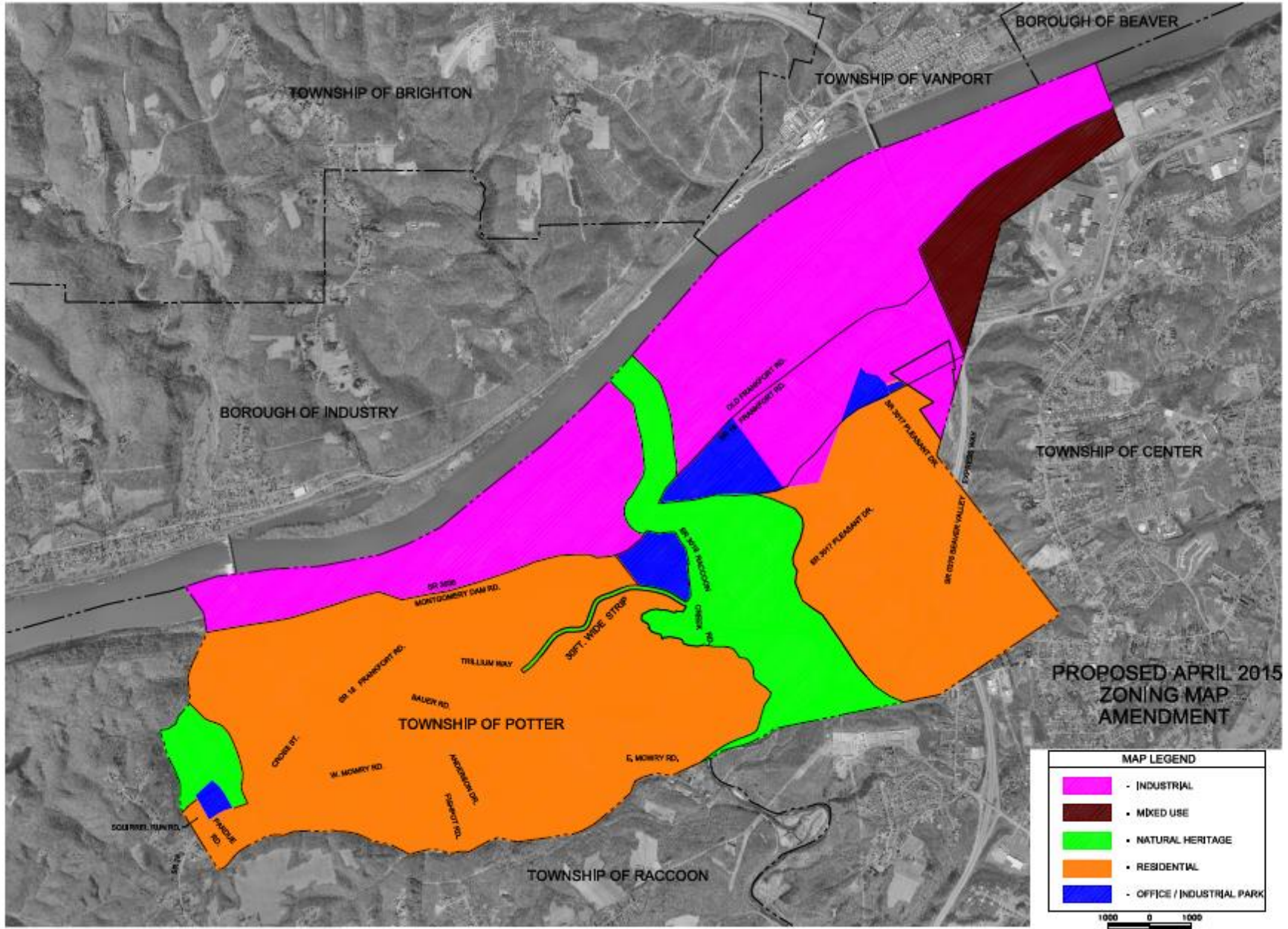


4/15/2015 11:44 AM
 4/15/2015 11:44 AM
 4/15/2015 11:44 AM



**PROPOSED APRIL 2015
ZONING MAP
AMENDMENT**

MAP LEGEND	
	INDUSTRIAL
	MIXED USE
	NATURAL HERITAGE
	RESIDENTIAL
	OFFICE / INDUSTRIAL PARK

1000 0 1000
SCALE IN FEET



DATE	4/15/2015
BY	WIDMER ENGINEERING
FOR	POTTER TOWNSHIP
PROJECT	ZONING MAP AMENDMENT

WE
WIDMER ENGINEERING
1000 INDEPENDENCE PLACE, SEVENTH FLOOR, FALLEN, PA 15222

ZONING MAP AMENDMENT
POTTER TOWNSHIP
ZONING MAP UPDATE
POTTER TOWNSHIP
BEAVER COUNTY, PENNSYLVANIA

PROJECT NO.	15037
FILE NO.	
DATE	04/15/2015
SCALE	AS NOTED
SHEET NUMBER 1 OF 1	